

MEET

L A S V E G A S



YOUR VISION. OUR VENUE.



233 South 4th St. Las Vegas, NV 89101 | 702.734.6338 | WWW.MEETLV.COM



3	FIRST FLOOR SHOWROOM	12	FLOOR PLANS
4	FIRST FLOOR OUTDOOR PAVILION	13	CAPACITY CHART OUTDOOR PAVILION & GROUND FLOOR
5	FIRST FLOOR PARKING LOT	14	CAPACITY CHART 2ND FLOOR - MEETING ROOMS
6	SECOND FLOOR MEETING ROOMS	15	CAPACITY CHART 3RD FLOOR
7	THIRD FLOOR MEETING ROOMS	16	CAPACITY CHART MEET LAS VEGAS
8	CORPORATE & EXHIBITION	17	MEET LAS VEGAS CLIENT LIST
9	SOCIAL	18	FAQs
10	WEDDINGS		
11	LOCATION		



HIGHLIGHTS:

- Unistrut rigging system
- Customizable Martin Cyclo Lighting system
- A/V TeleData connectivity panels every 10 feet on ceiling, walls, and floor
- Built in HD projector and rig points for screen
- Integrated house sound system
- Water and waste locations in the Showroom floor
- Smooth surfaces throughout for custom branding wall and floor prints
- Security cameras throughout
- High-speed wired and wireless internet available
- Large event-access door for easy load- in/out or vehicle entry
- Data feed capabilities to 2nd and 3rd floors
- Fully equipped catering kitchen located just off the Showroom floor with convenient load-in and load-out access

4TH STREET / BRIDGER LOBBY

- Key card security access
- Extended registration, vendor, or exhibit area
- Utilize as an additional entrance for attendees or VIPs
- Fog wall *(only available in 4th street lobby)*
- Martin Cyclo Lighting *(only available in 4th street lobby)*

SHOWROOM

Square Feet 4,140
69' L x 60' W x 17'2" H

Capacity

Reception	615
Theater	476
Classroom	182
Banquet	300
U-Shape	50
Hollow Square	48
8'x10' Exhibits	40
10'x10' Exhibits	29

4TH STREET LOBBY

Square Feet 836
44' L x 19' W x 17'2" H

Capacity

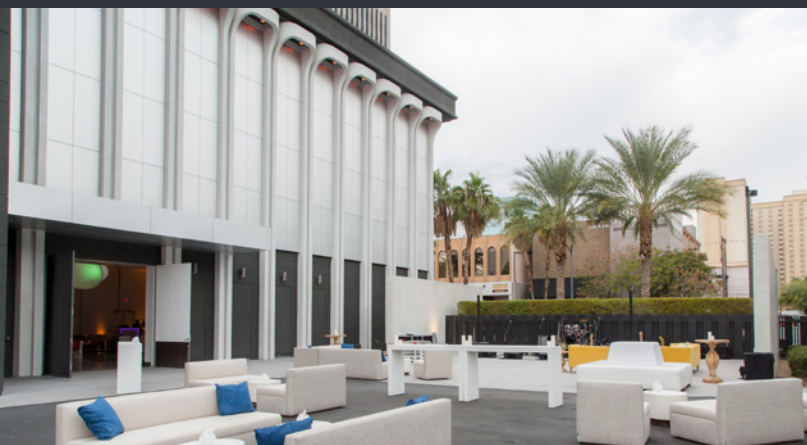
Reception	73
Theater	42
Classroom	26
Banquet	50

BRIDGER LOBBY

Square Feet 598
26' L x 23' W x 7'5" H

Capacity

Reception	50
Theater Style	18



HIGHLIGHTS:

- Customizable LED exterior lighting
- Smooth surface for image projection
- Private transportation portico provides easy access for guest
- Adjacent parking lot for increased event capacity
- Power and A/V TeleData connectivity panels
- Tent-able in a variety of configurations
- Multiple pedestrian and vehicle entry gates for easy load-in and load-out access
- High-speed wired and wireless internet available
- Existing grommets for exterior banner hanging

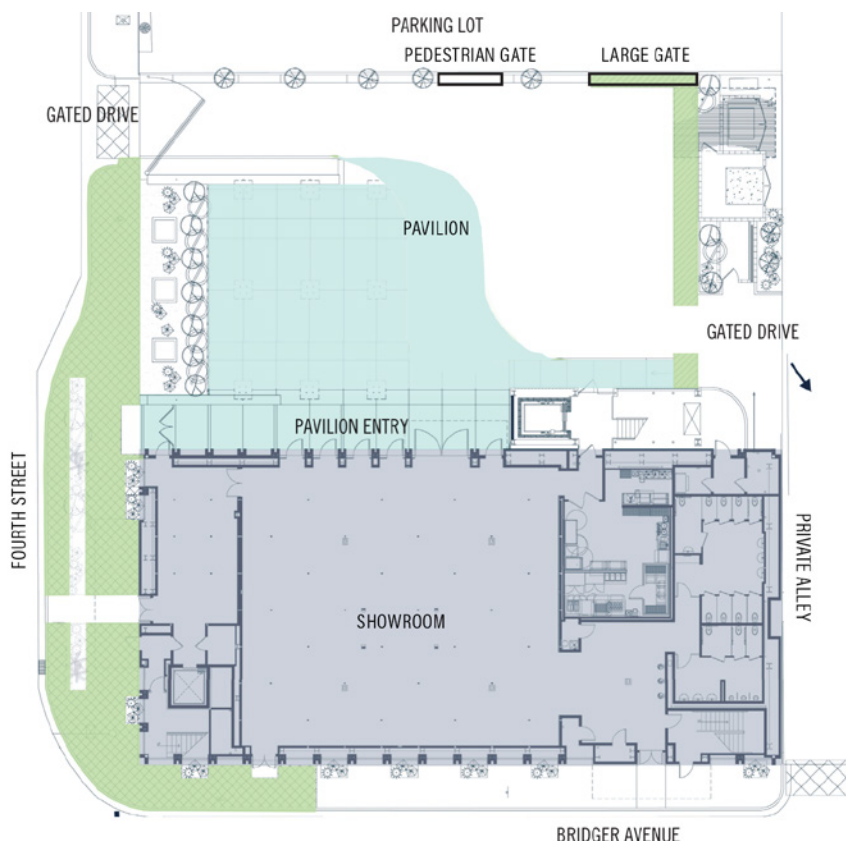
OUTDOOR PAVILLION

Square Feet 11,234

137' L x 82' W

Capacity

Reception	400
Theater	400
Classroom	132
Banquet	400
U-Shape	65
Hollow Square	82
8'x10' Exhibit	43
10'x10' Exhibit	35



Maximize your event options by incorporating the adjacent parking lot into your event plans. With quick access to MEET Las Vegas, the parking lot provides an amazing opportunity to create unique zones of interest within your event. Whether used for parking up to 53 cars, tenting, or outdoor staging, the parking lot will add distinct value to your event.

HIGHLIGHTS:

- 53 standard parking spaces or a 140' x 125' area to customize your event
- Tent-able in a variety of configurations to create an extended climate-controlled venue
- Convenient access to exterior power distribution points

PARKING LOT

Square Feet 17,500

140' L x 125' W

OPTIONAL TENT

Square Feet 8,000

100' L x 80' W

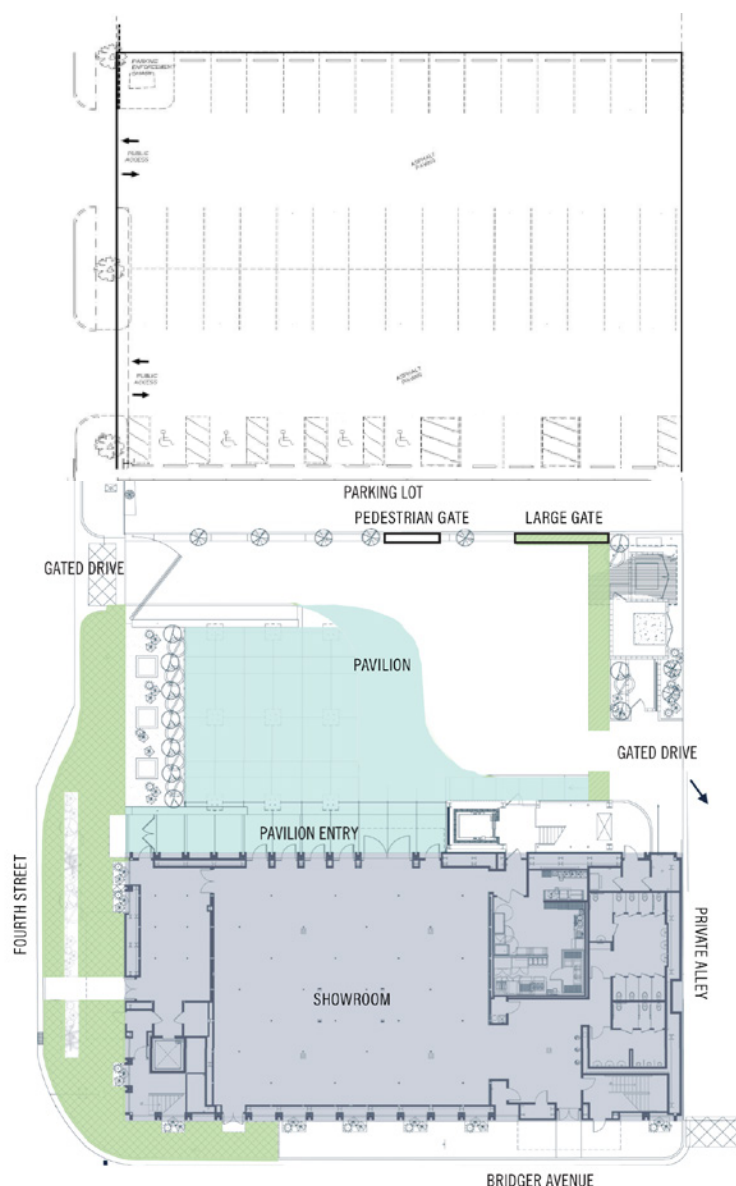
Capacity

Reception 1,600

Theater 850

Classroom 537

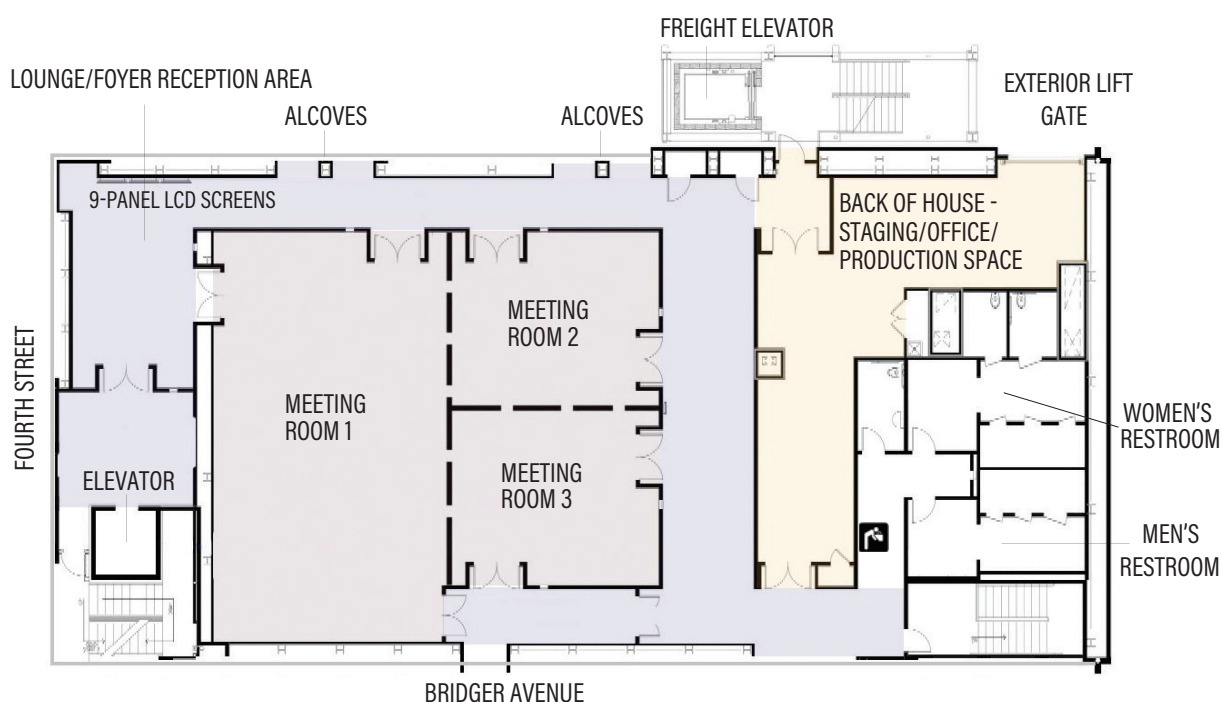
Banquet 410

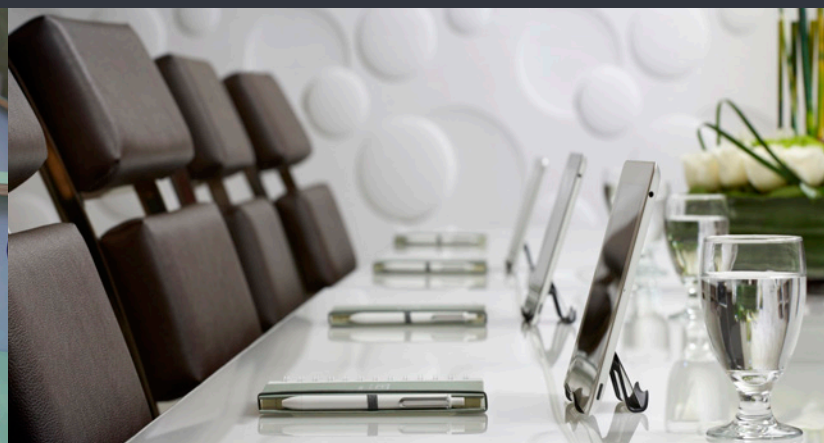




HIGHLIGHTS:

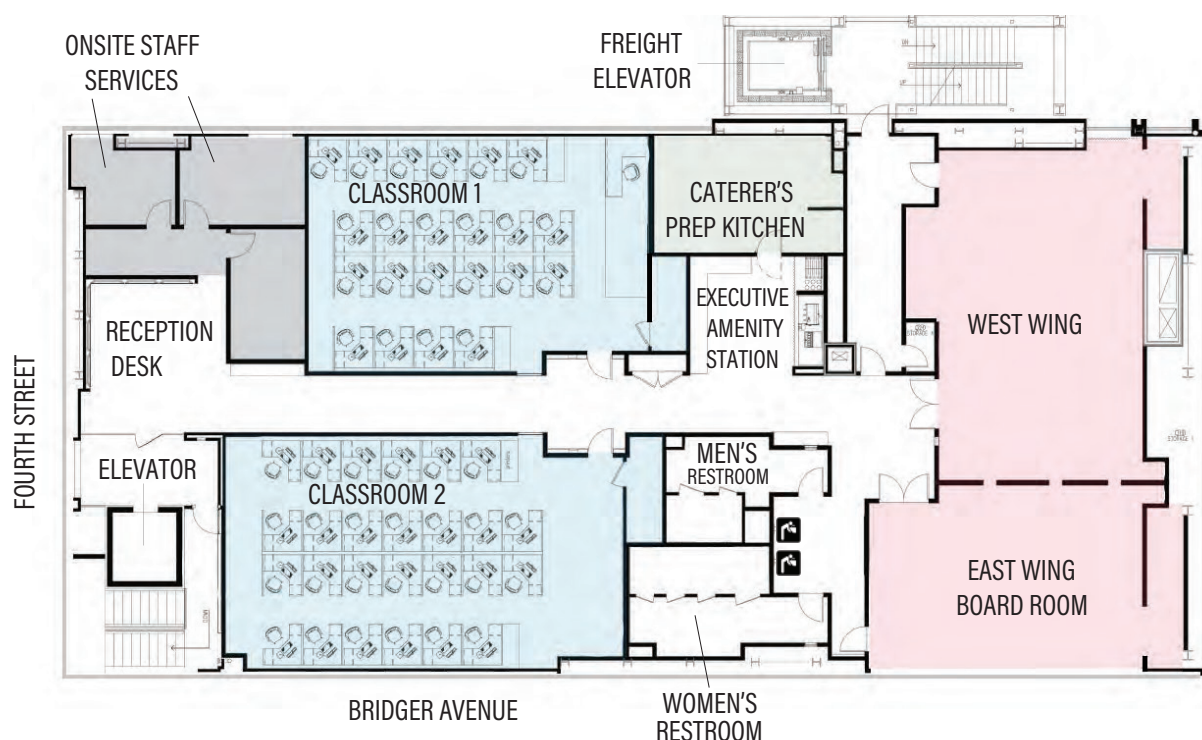
- Generous wrap-around foyer, reception, and/or lounge space
- Foyer area with customizable array of nine LCD monitors
- Electronically controlled access for VIP events
- A/V TeleData connectivity panels every 10 feet
- Ceiling mounted HD projectors and screens
- Main meeting space is divisible into three rooms
- Smooth walls and flat-pile carpet for custom print branding
- Four branding display alcoves for experiential design, product, and live model displays
- Easy load-in and load-out
- High-speed wired and wireless internet available
- Integrated house sound and security cameras throughout space





HIGHLIGHTS:

- Two multimedia training rooms with built-in computer workstations and instructor station
- East Wing Boardroom features LCD screen, HD projector, and drop-down screen
- West Wing meeting room with LCD screen
- Foyer gallery with art rail systems for customized corporate branding opportunities
- Executive amenity and refreshment center
- Reception area with customizable array of six LCD monitors
- Caterer's prep and baking kitchen
- High-speed wired and wireless internet available
- Electronically controlled access for VIP events
- Security cameras throughout
- Onsite business services available for printing, copying, and scanning needs



UNBELIEVABLE. MEET UNFORGETTABLE.

For event planners and businesses seeking a unique venue, MEET provides a truly customizable, technologically advanced, personally inspiring meeting and event space in the heart of Downtown Las Vegas.

Anything is possible here, a true blank-canvas opportunity for the event planner featuring multiple space capabilities and configurations, and all the exciting entertainment of Las Vegas within footsteps.



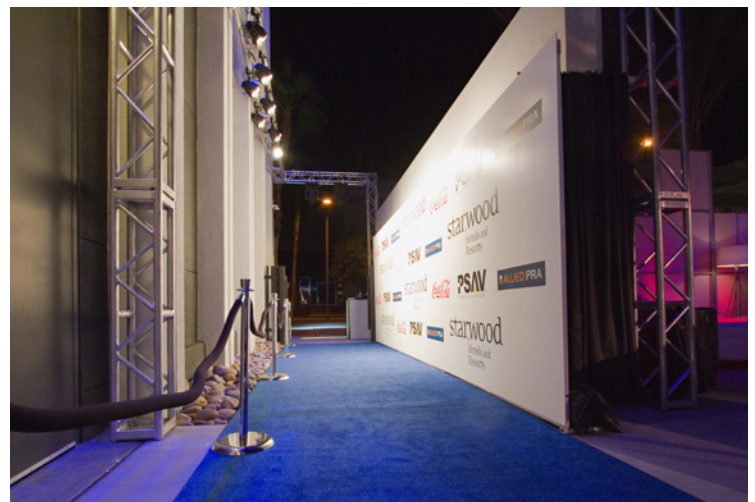
FEATURES:

- 40,000 sq. ft. of configurable event space
- Three customizable floors
- Enclosed and open air pavilion
- Robust internet connectivity
- Central downtown location
- Complete interior/exterior branding capability
- Seamless load in and load out
- Color-changing interior/exterior lighting
- Integrated digital media displays



USES:

- Business meetings and corporate events
- Multimedia training center
- Award presentations
- Breakout and ancillary meetings
- Charity events
- Product launches
- Tradeshows and exhibits
- Concerts
- Pop-up restaurants and retail
- Community events



YOUR VISION. OUR VENUE.

233 South 4th St. Las Vegas, NV 89101 | 702.734.6338 | WWW.MEETLV.COM

EXPECTATIONS. MEET BLOWN AWAY.

Your vision meets our venue at MEET Las Vegas, an unparalleled space for hosting dynamic social events. Designed to make anything possible, this one-of-a-kind space features three customizable floors, indoor and open-air pavilions, and state-of-the-art lighting and audiovisual display systems.

Create your own ambiance with the perfect lighting, décor, and technology to highlight your special event. Delight your guests with appetizing cuisine that can be prepared on-site in our full, onsite kitchen facility. Take advantage of a private, gated, adjoining pavilion that allows your guests the freedom to move outdoors freely.



FEATURES:

- 40,000 sq. ft. of configurable event space
- Three customizable floors
- Indoor or open air pavilion options
- Robust internet connectivity
- Central downtown location
- Complete interior/exterior branding capability
- Quick load in and load out
- Color-changing interior/exterior lighting
- Integrated digital media displays

USES:

- Weddings, celebrations, and social events
- Quinceaneras/Bar/Bat Mitzvahs
- Reunions
- Charity events
- Concerts
- Social events
- Community events
- Holiday parties



SPECIAL DAY. MEET SPECIAL PLACE.

MEET offers you the freedom to express your own individuality when designing your special day. Your day celebrates who you are as a couple. The colors you select to set the style and tone of your event have meaning to you. Whatever your vision, MEET is the ideal venue to create lifetime memories of your special day. Design your space, create your menu, and set the mood with specialized lighting and custom furniture arrangements. Don't be afraid to dream big – as the possibilities are endless.



1ST FLOOR & PAVILION

MEET's ground floor Showroom can accommodate 300 seated guests. Additional space can be added by including the adjacent outdoor Pavilion. Under the shining sun or sparkling stars MEET's open air pavilion is an amazing spot for ceremonies and receptions. The Pavilion can be tented and is an excellent location for exterior live music during your event.

2ND FLOOR

The second floor provides an intimate, customizable space for engagement parties, bridal showers, ceremonies, receptions, and rehearsal dinners.

3RD FLOOR

Private space available for pre- and post-ceremony preparations.



PERFECT EVENT. MEET PERFECT LOCATION.

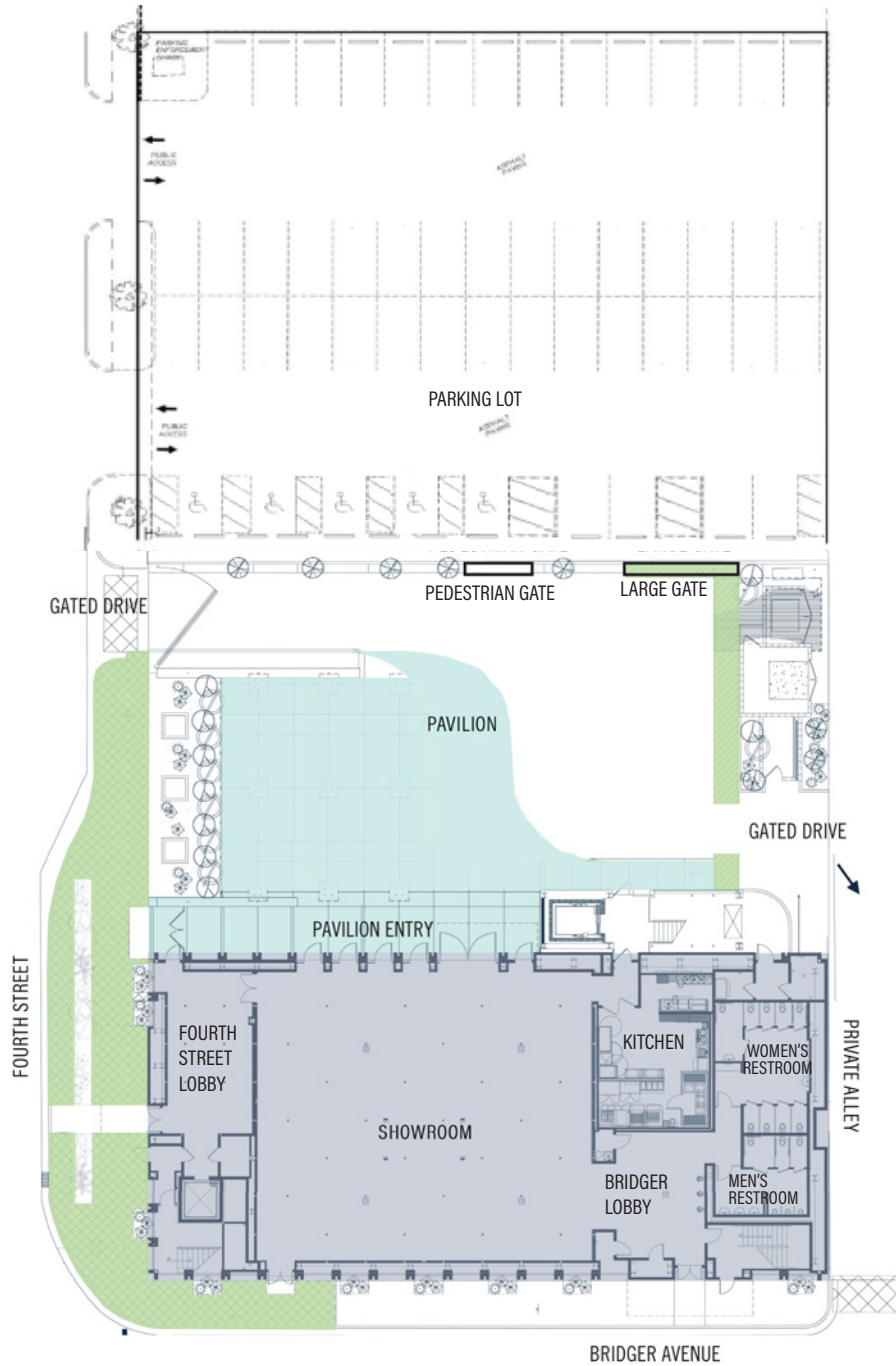
Las Vegas is famous for being a parking-friendly city. MEET stays true to that with several simple options:

- Dedicated access to 53 spaces directly north of the venue, which can be rented for your event.
- Valet parking service can be arranged.
- Three largest parking garages in downtown Las Vegas and multiple Las Vegas operated street lots within one-half block of MEET
- Drop-off/Pick-up – our multiple guest-friendly entry points make it easy to step out of your vehicle and into the event.



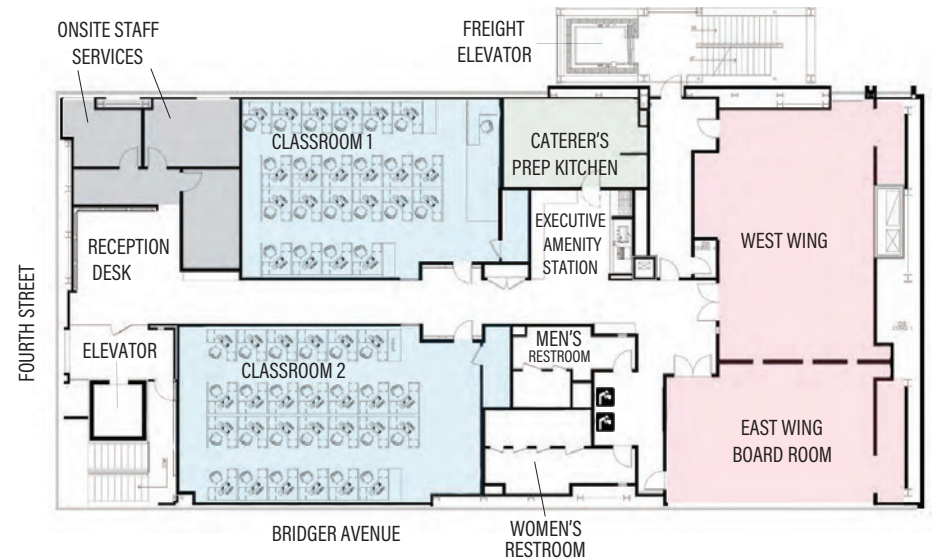
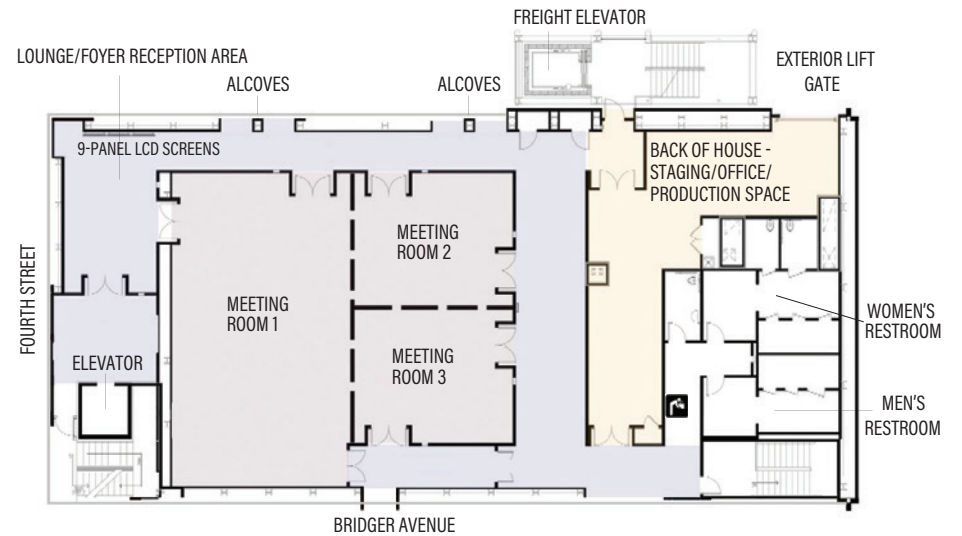
Location	Distance	Avg. Travel Time
Circa Resort & Casino	1 mile	4 mins
The Expo at World Market Las Vegas	2 miles	6 mins
Stratosphere	1.7 miles	6 mins
LV Convention Center	2.8 miles	9 mins
City Center	5 miles	14 mins
MGM Grand	5.4 miles	16 mins
Mandalay Bay	6.1 miles	18 mins
Harry Reid International Airport	6.3 miles	18 mins





SHOWROOM/PAVILION/PARKING

2ND FLOOR



3RD FLOOR

OUTDOOR PAVILION & GROUND FLOOR

Room(s)	Square Feet	Dimensions (LxW)	Ceiling	Reception	Theater	Classroom	Banquet	U-Shape	Hollow-Square	8'x10' Exhibit	10'x10' Exhibit
Pavilion/Showroom	14,964	-	-	1,573	-	-	-	-	-	-	-
Outdoor Pavilion	11,234	137' x 82'	-	400	400	132	400	65	82	43	35
Showroom	4,140	69' x 60'	17'2"	615	476	182	300	50	48	40	29
4th Street Lobby	836	44' x 19'	17'2"	73	42	26	50	-	-	-	-
Bridger Lobby	598	26' x 23'	7'5"	50	18	-	-	-	-	-	-
Banquet Kitchen	682	31' x 22'	8'	-	-	-	-	-	-	-	-
Parking Lot	17,550	135' x 130'	-	1,950	2,925	1,253	1,450	-	-	112	84

2ND FLOOR - MEETING ROOMS

Room(s)	Square Feet	Dimensions (LxW)	Ceiling	Reception	Theater	Classroom	Banquet	U-Shape	Hollow-Square	8'x10' Exhibit	10'x10' Exhibit
Meeting Rooms 1-3	2,832	-	10'	398	240	123	180	59	76	23	17
Meeting Room 1	1,590	53' x 30'	10'	232	180	74	100	28	30	14	11
Meeting Room 2	621	27' x 23'	10'	63	42	24	30	20	28	5	3
Meeting Room 3	621	27' x 23'	10'	63	42	24	30	20	28	6	4
Foyer	2,176	-	10'	-	-	-	-	-	-	-	-
Lobby	255	17' x 15'	10'	-	-	-	-	-	-	-	-

3RD FLOOR

Room(s)	Square Feet	Dimensions (LxW)	Ceiling	Reception	Theater	Classroom	Banquet	U-Shape	Hollow-Square	8'x10' Exhibit	10'x10' Exhibit
East/West Wing	1,912	-	8'6"	175	180	75	110	56	64	11	10
East Wing	736	32' x 23'	8'6"	70	50	36	40	24	28	4	4
West Wing	1,176	42' x 28'	8'6"	105	95	40	60	32	40	7	6
Classroom 1 <i>22 Work Stations, Dual-Monitors</i>	1,066	41' x 26'	8'6"	-	-	22	-	-	-	-	-
Classroom 2 <i>26 Work Stations, Single Monitors</i>	1,344	48' x 28'	8'6"	-	-	26	-	-	-	-	-



CAPACITY CHART

YOUR VISION. OUR VENUE. NOTHING COMPROMISED.
233 South 4th St. Las Vegas, NV 89101 | 702.734.6338 | www.MEETLV.com

Room(s)	Square Feet	Dimensions (LxW)	Ceiling	Reception	Theater	Classroom	Banquet	U-Shape	Hollow-Square	8'x10' Exhibit	10'x10' Exhibit
1ST FLOOR											
Pavilion/ Showroom	12,585	-	-	1,200	-	-	-	-	-	-	-
Outdoor Pavilion	11,234	137' x 82'	-	-	400	132	400	65	82	43	35
Showroom	4,140	69' x 60'	17'2"	-	476	182	300	66	84	40	29
4th Street Lobby	836	44' x 19'	17'2"	-	42	26	50	-	-	-	-
Bridger Lobby	598	26' x 23'	7'5"	50	18	-	-	-	-	-	-
Parking Lot	17,550	135' x 130'	-	1,950	2,925	1,253	1,450	-	-	112	84
2ND FLOOR											
Meeting Rooms 1-3	2,832	-	10'	398	240	123	180	51	60	23	17
Meeting Room 1	1,590	53' x 30'	10'	232	180	74	100	39	48	14	11
Meeting Room 2	621	27' x 23'	10'	63	42	24	30	12	18	5	3
Meeting Room 3	621	27' x 23'	10'	63	42	24	30	12	18	6	4
Meeting Rooms 2 - 3	1,242	46' x 27'	10'	126	95	54	70	24	30	5	5
Foyer	2,176	-	10'	-	-	-	-	-	-	-	-
Lobby	255	17' x 15'	10'	-	-	-	-	-	-	-	-
3RD FLOOR											
East/West Wing	1,912	-	8'6"	175	180	75	110	56	64	11	10
East Wing	736	32' x 23'	8'6"	70	50	36	40	24	28	4	4
West Wing	1,176	42' x 28'	8'6"	105	95	40	60	32	40	7	6
Classroom 1 <i>22 Work Stations, Dual-Monitors</i>	1,066	41' x 26'	8'6"	-	-	22	-	-	-	-	-
Classroom 2 <i>26 Work Stations, Single Monitors</i>	1,344	48' x 28'	8'6"	-	-	26	-	-	-	-	-

Note: Banquet Kitchen is 682 sq, 31'L x 22'W and 8' ceiling

2K Vegas	Kerastase (Division of Loreal)	Specialized Alternatives for Families and Youth (SAFY) of Nevada
Access Beauty Insiders/Unfiltered Experience	Kohler	Society Church Las Vegas
ADP	INSZoom	Southern Nevada Regional Housing Authority (SNRHA)
Aflac	Las Vegas Convention and Visitors Authority (LVCVA)	Southern Utah University
American Society of Civil Engineers	Las Vegas High School	Pride, Inc. (SNAPI)
Atlas Project	Las Vegas Hospitality Association (LVHA)	Sprint
Amazon Web Services	Las Vegas PMU	Starbucks
Ashley Furniture	Las Vegas Raiders	State Bar of Nevada
Association of Black Travel Professionals	Legacy Home Loans	STEK Automotive
Ballet120	LPSCon	SWS Contractors
Bank of America Samoa	Microsoft	Sysco Las Vegas
Barton Associates	Mike Holmes Inspections	Take Action Enterprises/ David Scott Peters
BOAR Communities	Moen	The Art Institute of Las Vegas
Bose	National Association of Catering Executives (NACE)	Thrive Market Place
Cannabis Wedding Expo	National Athletic Trainers' Association (NATA)	Top Practices
Canyon Springs High School	National School Choice	Trifacta
Chanel USA	National Concierge Association	UFC (Ultimate Fighting Championship)
Check Your Privilege	Neuroencoding Institute	UNLV Alpha Gamma Delta Sorority
Cheyenne High School	Nevada Connections Academy	UNLV School of Dentistry
Cisco	Nevada Department of Corrections	UNLV Tau Kappa Epsilon
Clark County Medical Society	Nevada Donor Network	UNLV Law School
Clark High School	Nevada Legal Services	US Air Force FMR
Communities in Schools of Southern Nevada	Nevada Independent Insurance Agents	Valley High School
Contact Pointe	Nevada Optometric Association	Velovita
CORT Event Furnishings	Nevada Recreation & Park Society	Veterans Association of Real Estate Professionals
Cox Business	Nevada Women's Film Festival	Vermeer Corporation
Critical Care Comics	NewBean Capital	Wells Fargo
Custom Benefit Consultants	Next Century Rebar	WOW Organics
Curve Brows	Nickelodeon	Your Bold is Beautiful (YBIB)
DaVita	NV Energy	Zappos
Deep Roots Harvest	Odoo	
East Career and Technical Academy	Opportunity Village	
Epsilon	PIMA Medical Institute	
Farmers Insurance	Pinecrest Academy	
Frito-Lay	Prada	
Galaxy Gaming	Reas Group	
Game Changer Wrestling	Rebel Athletic	
GES (Global Experience Specialists)	Rising Starz Magazine	
GRRRL Clothing	Samsung	
Healthcare Partners of Nevada	Scheme Events	
Hilton Corporate	SkinMedica	
Imagine Learning	Signature Real Estate	
Jewish Federation of Las Vegas		
JM3 Empowerment		

Our team was very pleased with MEET Las Vegas! We were fascinated by how our company logo was displayed on the screens, making our event very personal. We appreciate all the efforts that made our event such a success and we will be back soon!

— Jackie Guilfucci, DBE Coordinator, El Dorado Mountain Constructors Skanska USA



YOUR VISION. OUR VENUE.

233 South 4th St. Las Vegas, NV 89101 | 702.734.6338 | WWW.MEETLV.COM

How do I schedule an event at MEET Las Vegas?

To schedule an event, contact the Sales Department at (702) 734-6338 or email sales@meetlv.com.

How far in advance am I able to schedule my event at MEET Las Vegas?

Unlike many other casinos and hotels in Las Vegas, MEET allows booking for catered and non-catered events well in advance of the event date. For more information or availability, contact the Sales Department at (702) 734- 6338 or email sales@meetlv.com.

What are the room sizes and capacities of the exhibition rooms and meeting areas?

The first floor event space is 4,140 sq. ft. and accommodates up to 615 guests.

The second floor is 2,832 sq. ft. and accommodates up to 398 guests.

The third floor is 1,912 sq. ft. and accommodates up to 175 guests.

The third floor training classrooms can accommodate 22 and 26 students each.

The third floor boardroom can accommodate 24 guests.

The outdoor pavilion is 11,234 sq. ft. and accommodates up to 400 guests.

What food options are available for events?

MEET Las Vegas has an exclusive catering partner to make events simple and easy. A large, banquet-style kitchen is located on the first floor and a warming kitchen on the third floor is available to assist in expediting food service.

Where can I stay while attending my event?

MEET Las Vegas partners with several hotel properties in downtown Las Vegas and can assist with a room block if requested. All hotels are located within walking distance of MEET.

Is wireless access to the internet available?

WiFi up to 10 Mbps and up to 25 devices included in room rental. Additional wired or wireless service available up to 300 Mbps upon request. Wireless services available. Please contact the Sales Department at (702) 734-6338 or email sales@meetlv.com for pricing.

Is parking available?

MEET Las Vegas' entrance is adjacent to a 53-space parking lot. There are also multiple parking structures available in the near vicinity. Event Rates are available either individually, up to 25 spaces, or the entirety of the parking lot per 12-hour period. Please contact the Sales Department for more information.

How do I request a tour of MEET Las Vegas?

To schedule a tour, contact the Sales Department at (702) 734-6338 or email sales@meetlv.com.



YOUR VISION. OUR VENUE.

233 South 4th St. Las Vegas, NV 89101 | 702.734.6338 | WWW.MEETLV.COM